

Molesworth Severn bovine TB control operation

OSPRI's TBfree programme

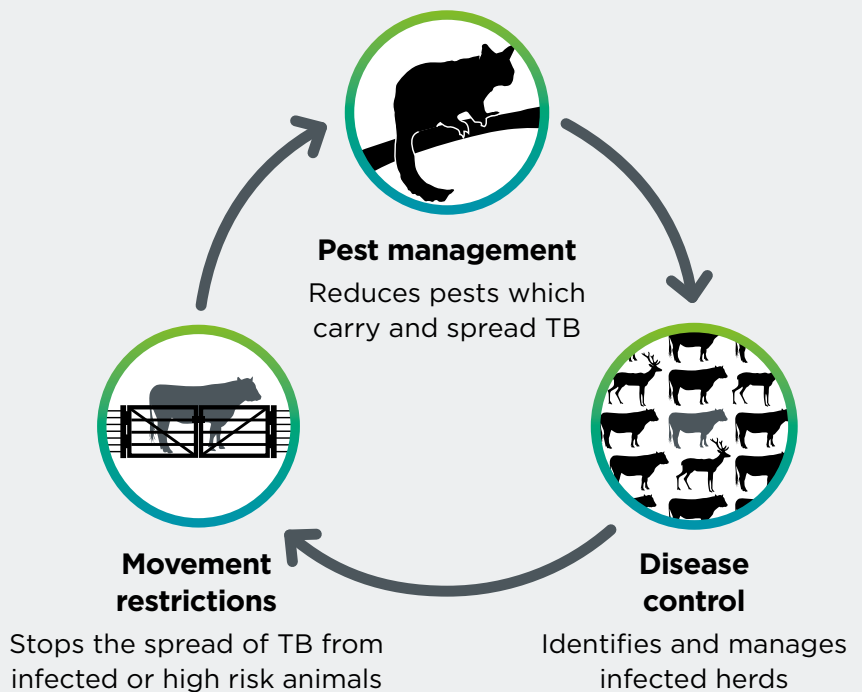
The TBfree programme aims to manage and eventually eradicate bovine tuberculosis (TB) from New Zealand's farmed cattle and deer and wild animal populations. Controlling disease prevents livestock production losses and protects the world leading reputation of New Zealand's dairy, beef and deer products. We use possum control, along with regular herd testing and movement restrictions, to achieve our eradication goals. Information gathered from wild animal surveys, recent and historic findings of TB in wild animals, herd testing results and the operational history of the region are used when planning operations.

Targeting possums

We're proposing a possum control operation in the Severn area of Molesworth (please see the map provided), covering approximately 2,000 hectares.

To control the spread of bovine TB, possum numbers need to be kept extremely low (around one to two animals every 10 hectares) for at least five years. This aerial operation will target an area that hasn't been effectively controlled before, helping improve coverage and support progress toward TB eradication.

How we control TB



What to expect from the operation

The proposed operation will begin with the distribution of non-toxic, tancoloured cereal pellets by helicopter. This "pre-feed" gives possums a taste for the pellets and overcomes bait shyness. One to two weeks later, toxic, green cereal pellets - each containing 0.15 percent biodegradable sodium fluoroacetate (also known as 1080) - will be applied by helicopter at a rate of one kilogram per hectare.

The Molesworth Severn operation will be subject to strict safety, quality-assurance and monitoring requirements.

Advanced GPS navigational equipment will be used to ensure the pellets are accurately placed and exclusion zones avoided.

We intend to use deer repellent on baits, where consent conditions allow, to reduce unintended by-kill within deer populations.

Continued over page...



The method

The vast majority of possum control in the region is done by local contractors using ground-based traps and hand-laid toxins. The remaining, far smaller area is controlled using aerially applied pellets containing biodegradable 1080. Aerial control is efficient, cost effective and has been extremely successful at reducing possum numbers down to very low levels in the past. It is preferred in areas like Molesworth due to the rugged nature of the terrain. The Parliamentary Commissioner for the Environment also supports aerial control. The commissioner completed an extensive review into the use of 1080, in which she strongly endorsed its continued use in New Zealand. Please visit pce.parliament.nz to read this report.

What happens now?

This operation is proposed to commence from May 2026 with Sawland Environmental doing the work on behalf of OSPRI's TBfree programme. Before the operation, affected landowners and occupiers will be contacted and visited by this contractor. They will discuss boundary issues, water supply safety and the management of any risks to dogs and livestock. Consents from the Department of Conservation and the Ministry of Health are required for this operation. Affected landowners and occupiers will be contacted again before the operation starts, notices will be published in local newspapers and warning signs will be placed at all likely access points to the operational area.

What hunters can do

Once the toxic bait has been applied, do not take game animals from the area (including the buffer zone) until the caution period has ended. This is determined by the speed of breakdown of the bait and possum carcasses. Hunters will need to refer to the NZ Food Safety authority (NZFSA) requirements for hunting wild and game estate animals, and

be aware of the pesticide status of the area they are hunting in. Do not bring dogs into the treatment area until after the caution period has ended. Dogs are particularly susceptible to poisoning by 1080. When dogs come into contact with 1080 through ingesting baits or scavenging poisoned carcasses, the outcome is usually fatal.

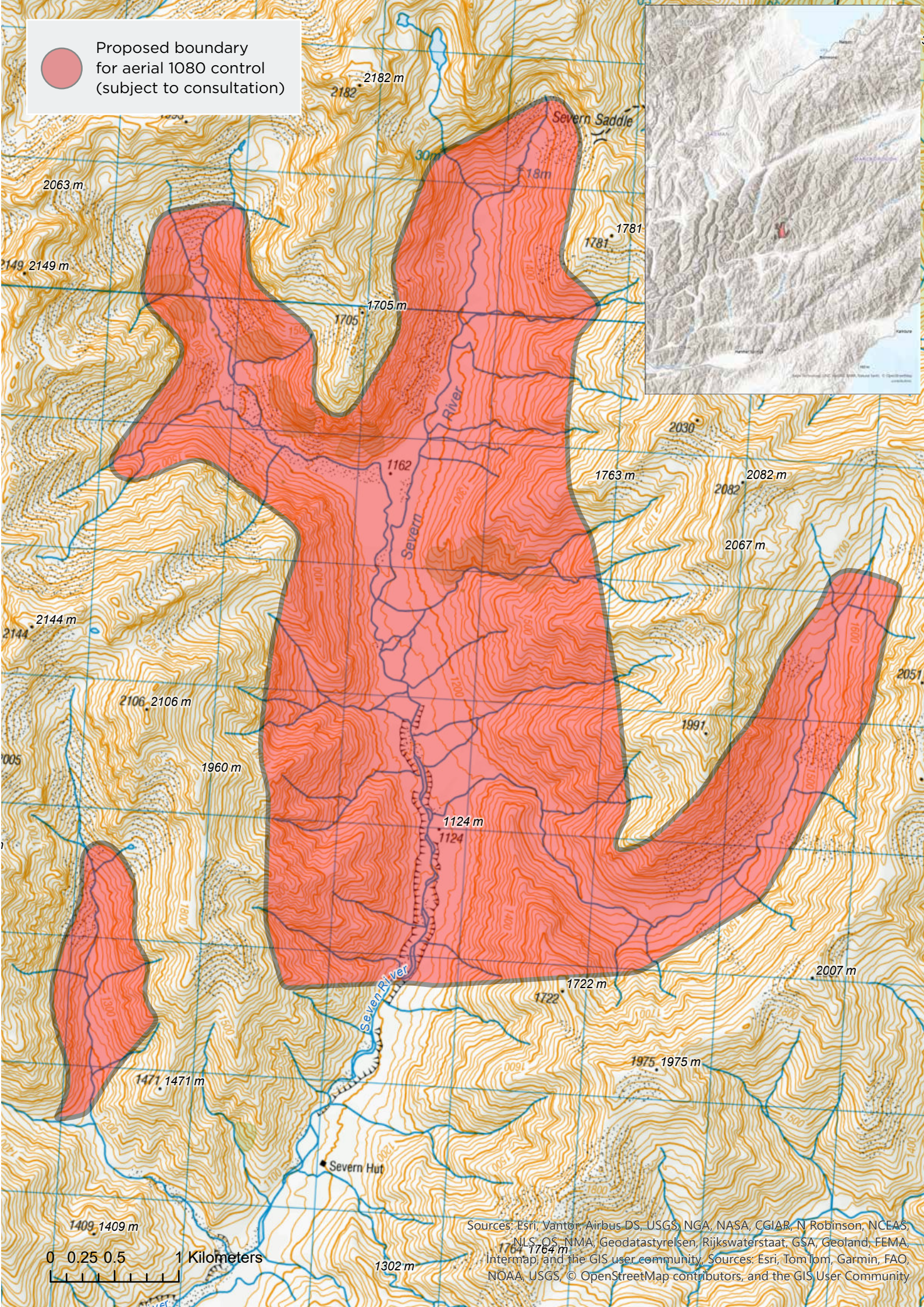
Biodiversity benefits

The operation will have additional conservation benefits for native birds and bush. Possums eat the forest canopy and prey on native birdlife, including eggs and chicks. Biodegradable 1080 is also extremely effective at controlling other introduced predators such as ship rats and stoats.





Proposed boundary
for aerial 1080 control
(subject to consultation)



Sources: Esri, Vantor, Airbus DS, USGS, NGA, NASA, CGIAR, N Robinson, NCEAS, NLS, OS, NMA, Geodatastyrelsen, Rijkswaterstaat, GSA, Geoland, FEMA, Intermap, and the GIS user community. Sources: Esri, TomTom, Garmin, FAO, NOAA, USGS, © OpenStreetMap contributors, and the GIS User Community

Important information

Warning signs will be placed at all main access points to the operational area. Everyone must follow the cautions on the signs. There's no health risk when using this area as long as you follow these instructions:

Do not handle any bait or allow children to wander unsupervised. Cereal baits containing 1080 are dyed green.

Do not hunt or take game from within a two-kilometre radius of the operational

area for human or pet consumption. It's an offence to sell meat products that have been exposed to 1080. Hunting can resume approximately four months following the control work.

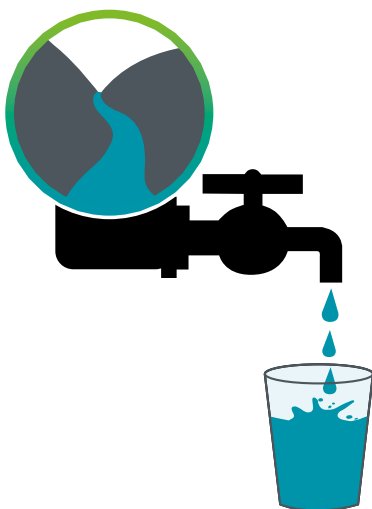
Please observe these rules whenever you see warning signs about the pesticide. Warning signs indicate that pesticide residues may still be present in the baits or carcasses. When the signs are officially removed, you can resume normal activities in the area.



Please note that dogs are prohibited on Molesworth Station.

Dogs are particularly susceptible to 1080. They must not be allowed access to bait or poisoned carcasses which remain toxic to dogs until they have fully decomposed.

Dogs must not be brought into treatment areas until the warning signs have been officially removed.



There is no risk to public drinking water

Biodegradable 1080 is highly soluble and does not persist in water or soil. Local health authorities apply strict conditions to aerial operations so that drinking water supplies are not contaminated. Safety has been confirmed by tests on several thousand water samples taken after aerial 1080 operations over many years.



What to do if you suspect poisoning

Contact your local hospital or doctor, or **dial 111**

National Poisons Centre
0800 POISON (764 766)

If a domestic animal is poisoned, contact a local veterinarian.



Further information

OSPRI New Zealand

PO Box 3412, Wellington 6140

P 0800 482 463

E vectorsni@ospri.co.nz

W ospri.co.nz

Contractor

Sawland Environmental

P 0800 729 368

E [communications@](mailto:communications@sawland.co.nz)

sawland.co.nz

Links

- Controlling bovine TB and how and why 1080 is used in New Zealand: ospri.co.nz/tb-and-pest-control
- Recreational hunting, 'TB Information for Hunters' factsheet: ospri.co.nz
- Commercial hunting: Ministry for Primary Industries and Department of Conservation websites.