

Waikoau bovine TB control operation

OSPRI's TBfree programme

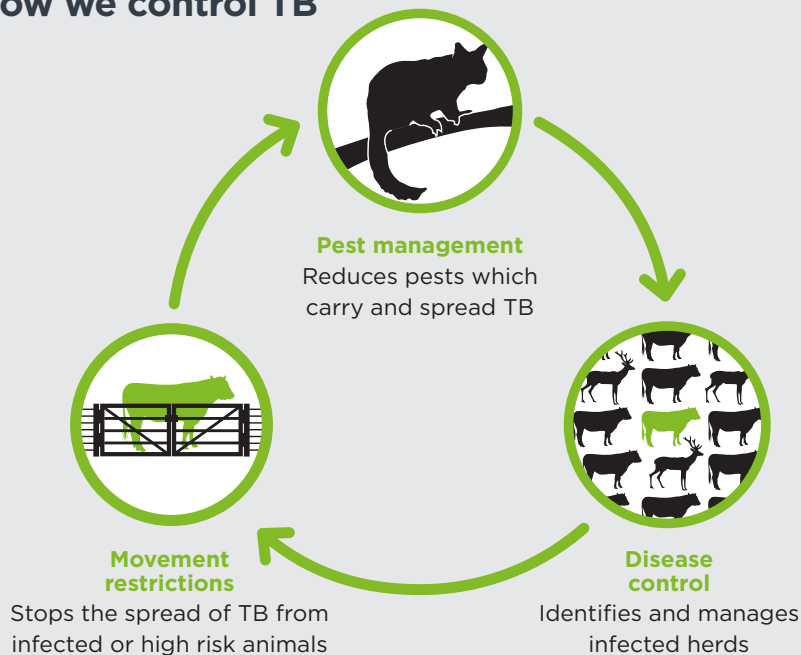
The TBfree programme aims to manage and eventually eradicate bovine tuberculosis (TB) from New Zealand's farmed cattle and deer and wild animal populations. Controlling disease prevents livestock production losses and protects the world leading reputation of New Zealand's dairy, beef and deer products. We use possum control, along with regular herd testing and movement restrictions, to achieve our eradication goals. Information gathered from wild animal surveys, recent and historic findings of TB in wild animals, herd testing results and the operational history of the region are used when planning operations.

Targeting possums

We're running a possum control operation in the Waikoau area (please see map provided for the operation area). It will cover 10,200 hectares.

This area was last treated in 2013. As part of the ongoing disease response to the Hawke's Bay infected herds, this control work is planned to reduce the possum population and the risk of disease spreading through wild animal populations to farmed cattle and deer.

How we control TB

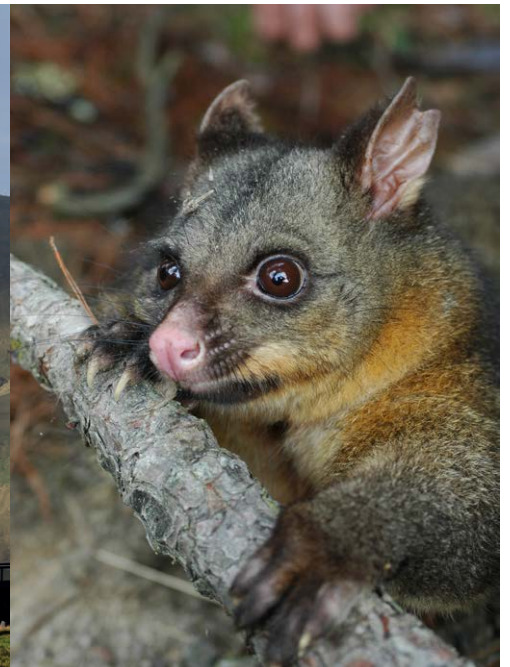


What to expect from the operation

The operation will begin with the distribution of non-toxic, tan-coloured cereal pellets by helicopter. This "pre-feed" gives possums a taste for the pellets and overcomes bait shyness. One to two weeks later, toxic, green cereal pellets – each containing 0.15 percent biodegradable sodium fluoroacetate (also known as 1080)

– will be applied by helicopter at a rate of two kilograms per hectare. That's about one bait to every 60 square metres. The Waikoau Aerial Operation will be subject to strict safety, quality-assurance and monitoring requirements. Deer Repellent may be required across areas of this operation.

Advanced GPS navigational equipment will be used to ensure the pellets are accurately placed and exclusion zones avoided.



The method

The vast majority of possum control in the region is done by local contractors using ground-based traps and hand-laid toxins. The remaining, far smaller area is controlled using aerially applied pellets containing biodegradable 1080. Aerial control is efficient, cost effective and has been extremely successful at knocking possum numbers down to very low levels in the past. It is preferred in areas like Waikato due to the rugged nature of the terrain. In 2011, the Parliamentary Commissioner for the Environment completed an extensive review into the use of 1080, in which she strongly endorsed its continued use in New Zealand. [Please visit \[pce.parliament.nz\]\(https://pce.parliament.nz\) to read this report.](https://pce.parliament.nz)

What happens now?

This operation will commence from May 2021. A contractor will be doing the work on behalf of OSPRI's TBfree

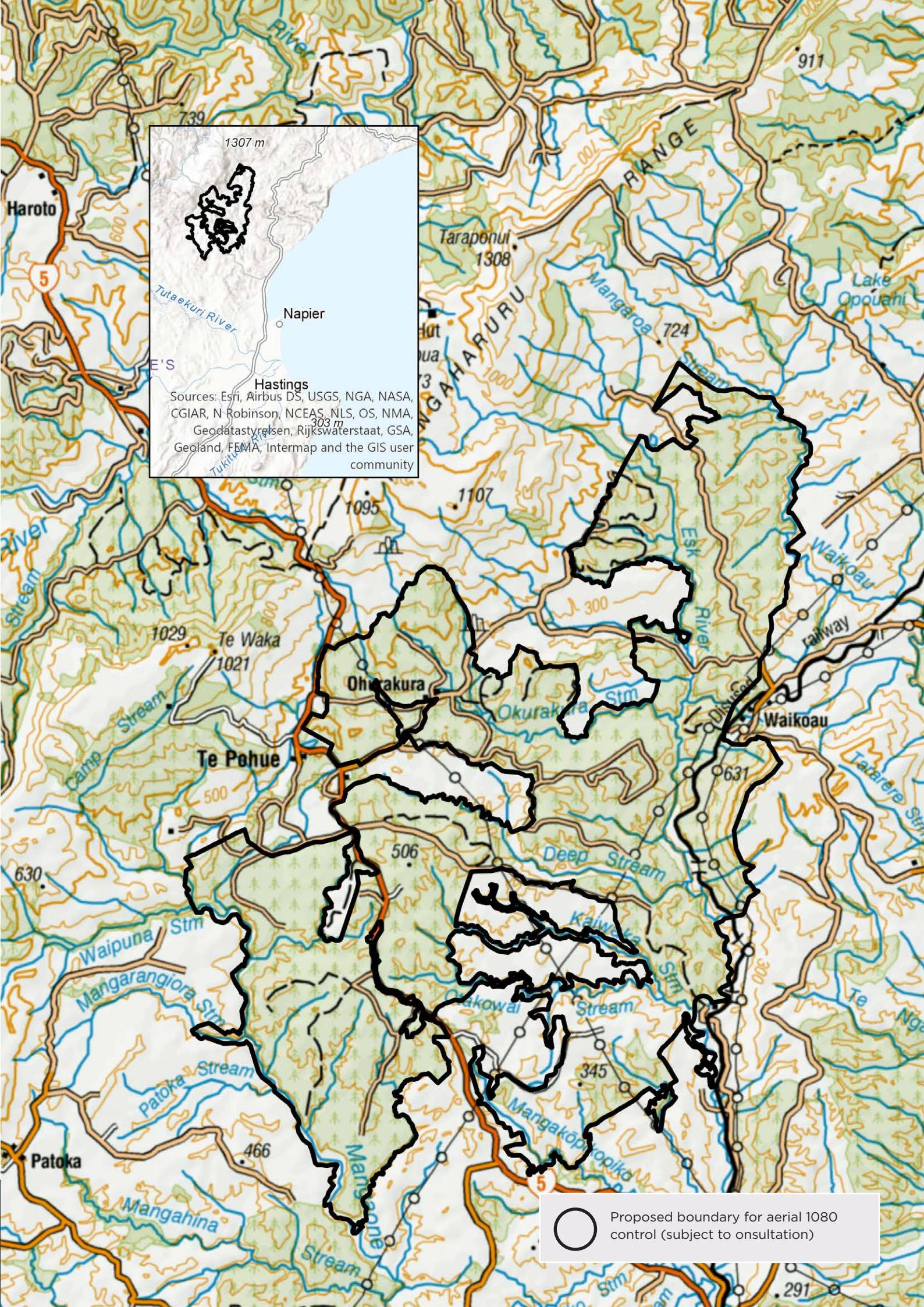
programme. Before the operation, affected landowners and occupiers will be contacted and visited by one of our contractors. They will discuss boundary issues, water supply safety and the management of any risks to dogs and livestock. Consents from the Department of Conservation and the Ministry of Health are required for this operation. Affected landowners and occupiers will be contacted again before the operation starts, notices will be published in local newspapers and warning signs will be placed at all likely access points to the operational area.

Biodiversity benefits

The operation will have additional conservation benefits for native birds and bush. Possums eat the forest canopy and prey on native birdlife, including eggs and chicks. Biodegradable 1080 is also extremely effective at controlling other introduced predators such as ship rats and stoats.



© Photo Matt Binns.



1307 m

Haroto

5

Tutaekuri River

E'S

Napier

Hastings

Sources: Esri, Airbus DS, USGS, NGA, NASA, CGIAR, N Robinson, NCEAS, NLS, OS, NMA, Geodatastyrelsen, Rijkswaterstaat, GSA, Geoland, FEMA, Intermap and the GIS user community

303 m

Tukituki River

Proposed boundary for aerial 1080 control (subject to consultation)

Important information

Warning signs will be placed at all main access points to the operational area and everyone must follow the cautions on the signs. There's no health risk when using this area as long as you follow these instructions:

Do not handle any bait or allow children to wander unsupervised. Cereal baits containing 1080 are dyed green.

Do not hunt or take game from within a two kilometre radius of the operational area for human

or pet consumption. It's an offence to sell meat products that have been exposed to 1080. Hunting can resume approximately four months following the control work.

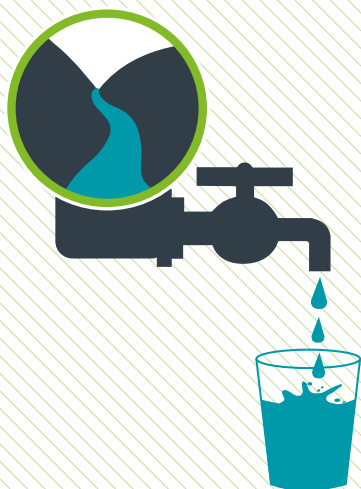
Please observe these rules whenever you see warning signs about the pesticide. Warning signs indicate that pesticide residues may still be present in the baits or carcasses. When the signs are officially removed, you can resume normal activities in the area.



Do not bring dogs into the area until the warning signs have been officially removed.

Dogs are particularly susceptible to 1080. They must not be allowed access to bait or poisoned carcasses which remain toxic to dogs until they have fully decomposed.

Free dog muzzles will be provided on request. Please contact OSPRI Palmerston North on vector.sni@ospri.co.nz or 06 353 2710 to obtain a muzzle.



There is no risk to public drinking water

Biodegradable 1080 is highly soluble and does not persist in water or soil. Local health authorities apply strict conditions to aerial operations so that drinking water supplies are not contaminated. Safety has been confirmed by tests on several thousand water samples taken after aerial 1080 operations over many years.



What to do if you suspect poisoning

Contact your local hospital or doctor, or **dial 111**

National Poisons Centre
0800 POISON (764 766)

If a domestic animal is poisoned, contact a local veterinarian.



Further information

OSPRI

Palmerston North Office
554 Main Street, PO Box 9078,
Palmerston North 4441.

P 06 353 2710

E vector.sni@ospri.co.nz

W ospri.co.nz

Contractor

Epro Ltd

P 0800 ASK EPRO
(0800 275 3776)

E control@epro.co.nz

For more information on controlling bovine TB and how and why 1080 is used in New Zealand, visit 1080facts.co.nz

For guidance on recreational hunting see our factsheet 'TB Information for Hunters' at ospri.co.nz

For guidance on commercial hunting see the Ministry for Primary Industries and Department of Conservation websites.