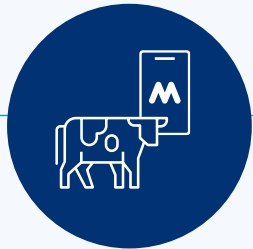


# SCENARIO



Animals going to grazing and the grazier (also a MINDA customer) requires the animals MINDA records.

 = MINDA customer action

 = Grazier action

Seller records an animal removal event and enters the buyer's details (PTPT code and NAIT number) in MINDA.



Buyer (grazier) logs into their MINDA account and processes the incoming animals/stock truck in via the event recorder.

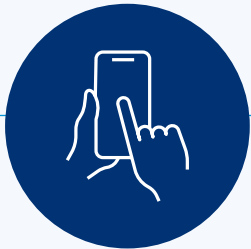


Buyer (grazier) approves the events in the holding pen in MINDA.

***Note:** Movement can be checked via pending completed movements in NAIT account.*

***Note:** When the animals return from grazing, the same process above would apply.*

# SCENARIO



Recording NAIT movements when animals go to and from another NAIT location (grazing).

 = MINDA customer action

 = Grazier action

## MINDA Customer (Owner/Manager/PICA etc)

Record and then approve a within herd NAIT movement in MINDA.

- Animal going to grazing - Record a send movement
- Animal returning from grazing - Record a receive movement



MINDA Customer actions are complete.



## Grazier

Confirm the pending movement in the NAIT system.



Grazier actions are complete.

**Note:** If the other PICA has not recorded their part of the movement, you can still record your part eg grazier hasn't recorded the send movement back, you can still record the receiving movement back to your NAIT location.

# SCENARIO



Animal has lost an EID at grazing and needs a new one.

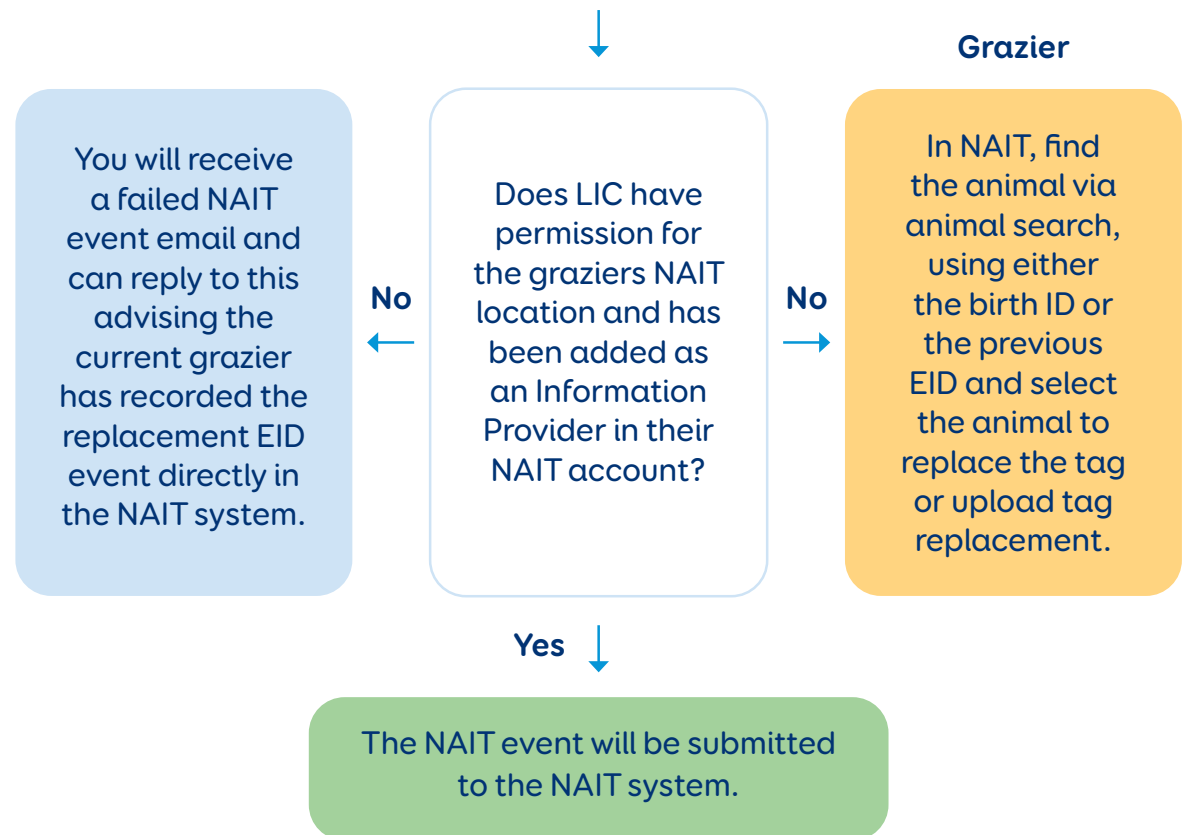
 = MINDA customer action

 = Grazier action

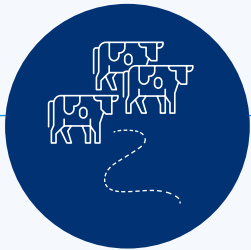
## MINDA Customer (Owner/Manager/PICA etc)

Record and approve a replacement EID event at the graziers NAIT location in MINDA.



**Note:** - If you have given the grazier a new EID to retag the animal, contact OSPRI to get this transferred in NAIT - If the EID was supplied by the grazier, it will not be in your MINDA tag bucket you will need to enter the 15 digit number.

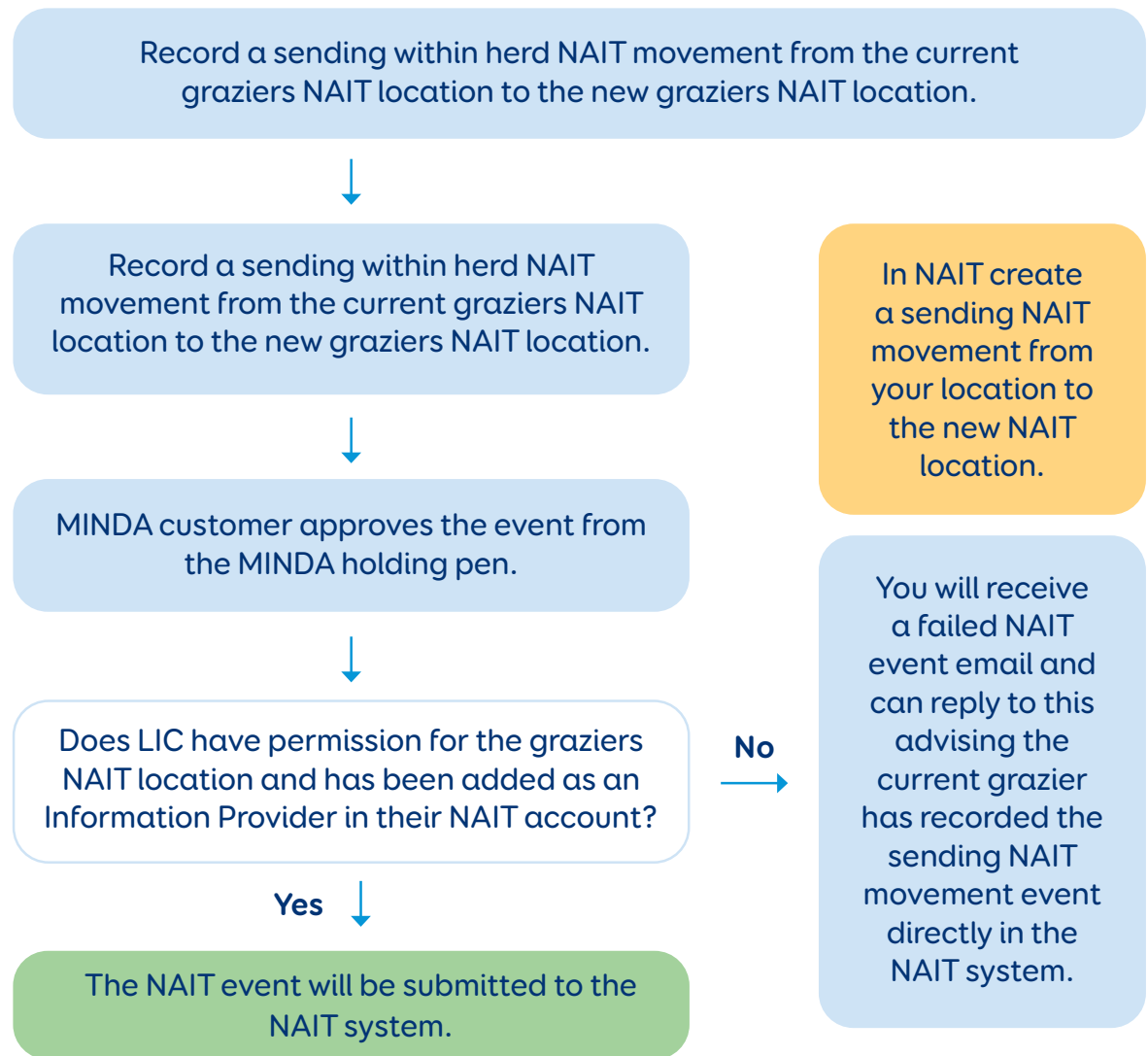


# SCENARIO



Animals are moving from current grazing location to another grazing location.

-  = MINDA customer action
-  = Grazier action



**Note:** If the animal is being sold and moving from the graziers to the new owners the same process would apply however the MINDA customer would record it as an animal removal event from the graziers NAIT location to the buyers NAIT location.