



Tagging and registering cattle and deer





What are the benefits of traceability?

The importance of traceability

The four main parts of traceability are:

- biosecurity
- food safety
- market assurance and access
- animal health surveillance.

It is a legal requirement to register your cattle and deer within the NAIT information system.





Tagging cattle and deer

When to tag?



You must tag your cattle and deer with an approved NAIT tag **within 180 days of birth, or before their first movement**, whichever occurs first.



You must then register this NAIT tag in the NAIT information system as being on an animal.





Register your animals

Why do you register animals?

Registering animals provides important animal details that can assist in the response to a disease outbreak.

It also tells us what tags are currently on an animal and what ones are in the shed.

This can save time and resource when tracing disease.



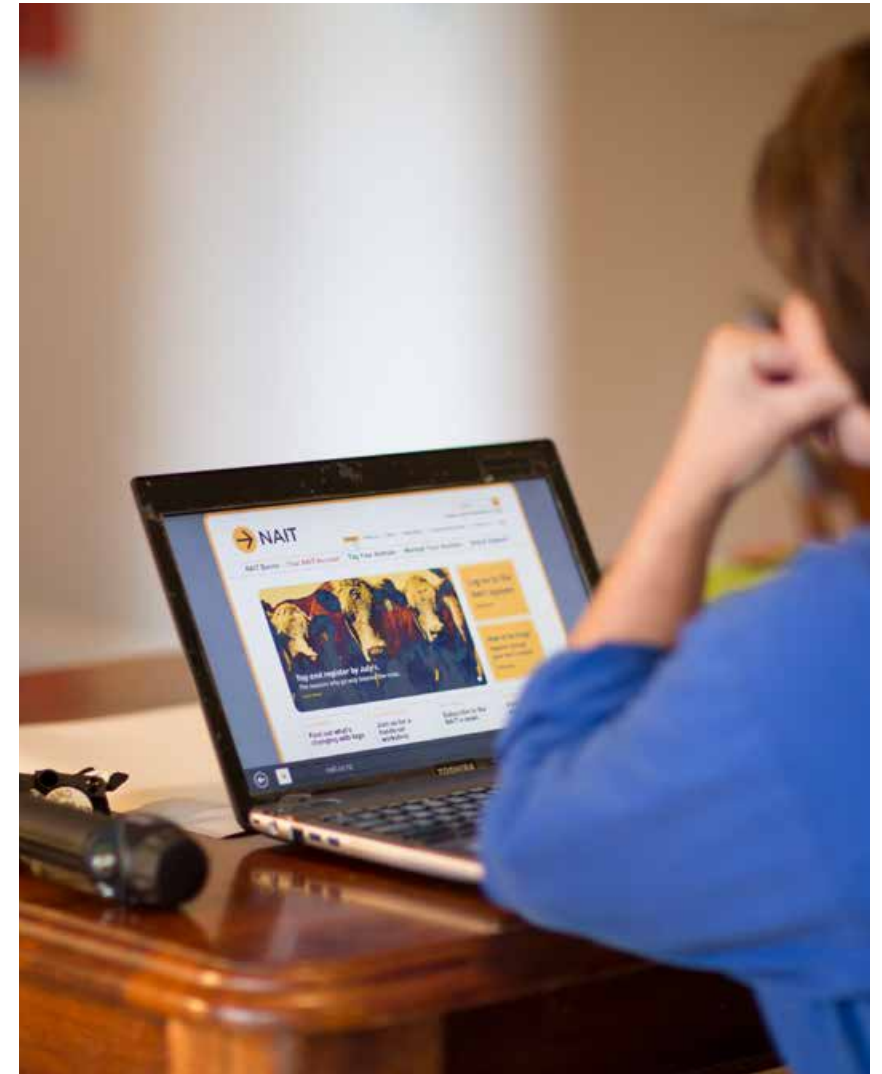


Register your animals

When to register?



After you tag an animal, you must register it in the NAIT information system **within 7 days of tagging** the animal **or before its first movement**, whichever occurs first.





Tagging cattle and deer

Animals exempt from tagging

Animals exempt from tagging include:

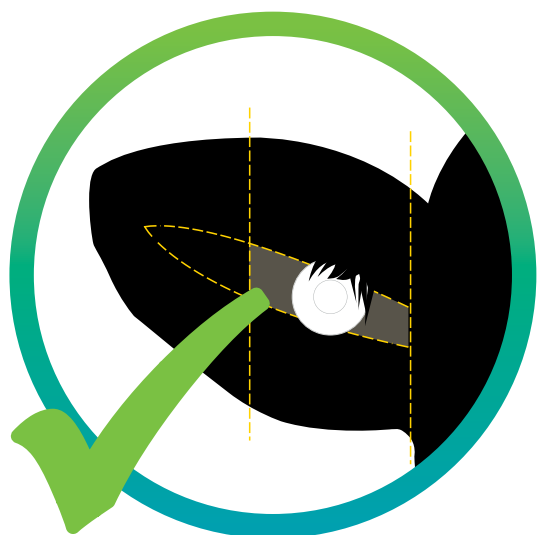
- bobby calves (under 30 days of age going direct to slaughter)
- fallow deer
- trophy stags
- unsafe to tag animals.



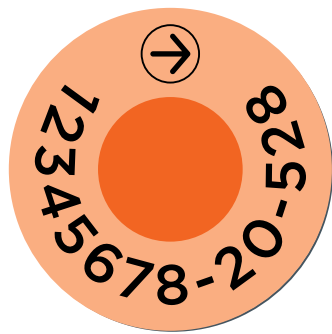
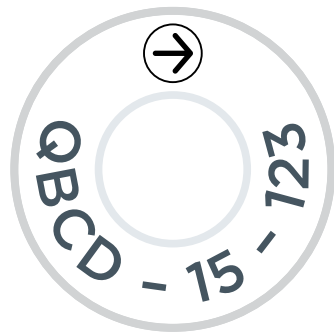


Tagging best practice

Help support lifetime traceability

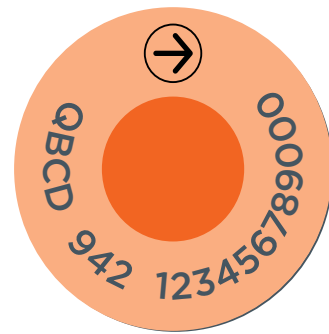
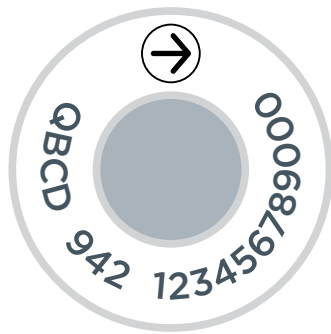


NAIT tag types



Birth tag

For all newborn animals



Replacement tag

For animals that lose their birth tag

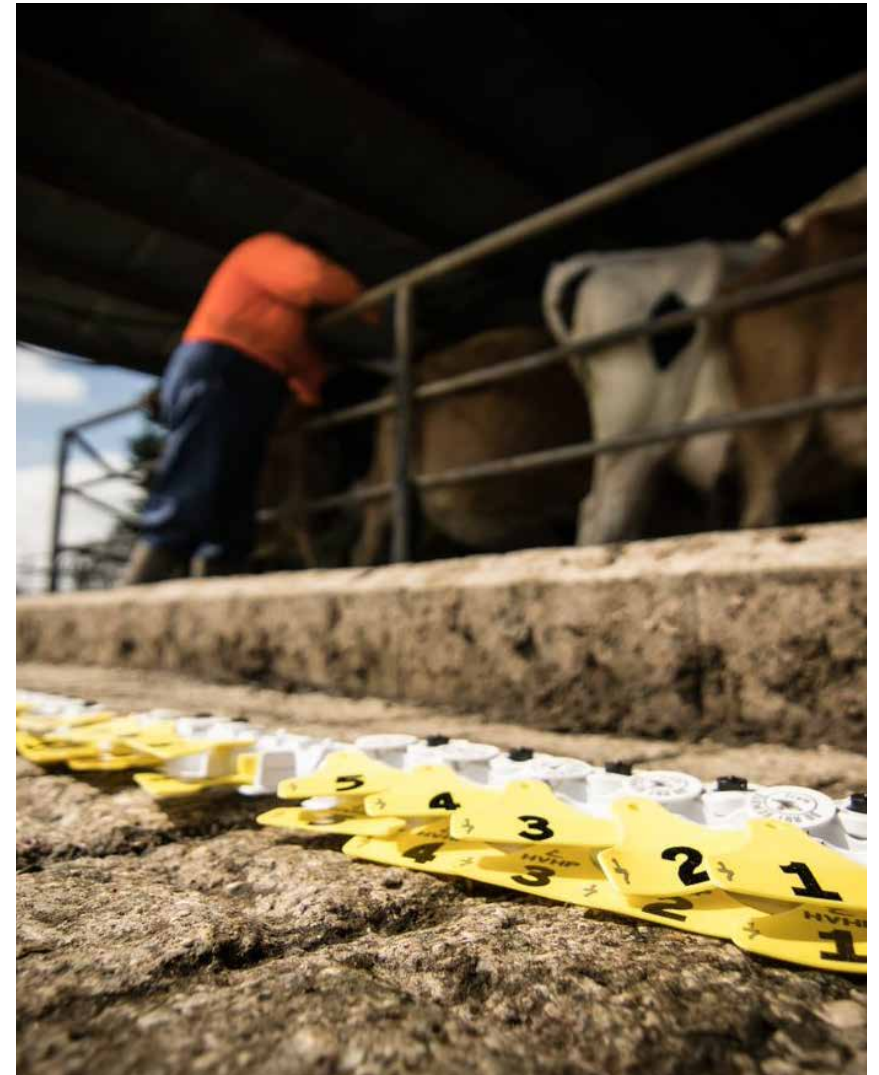
*Cattle tags are white, deer tags are orange.



Animal management tips

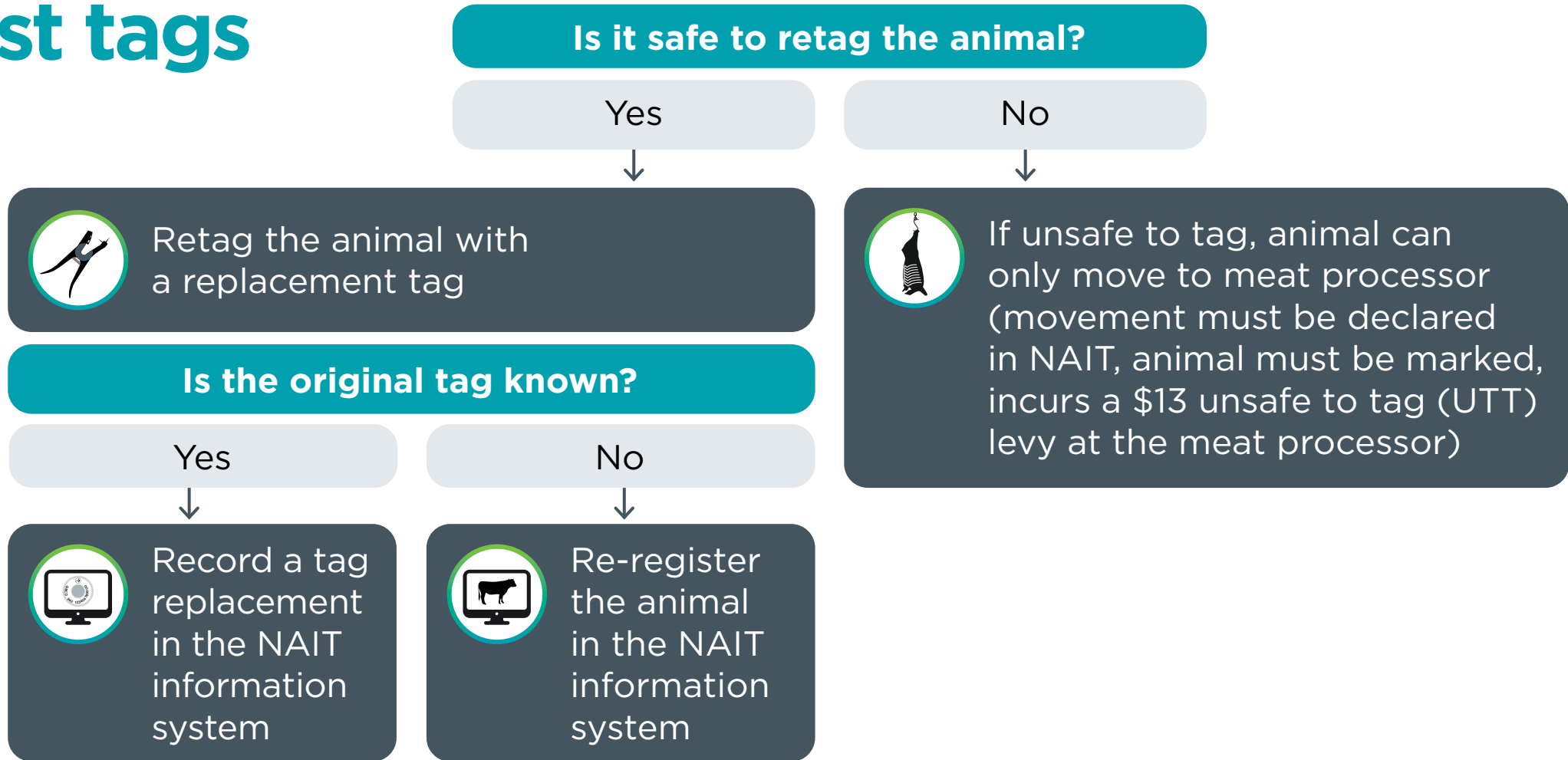


You can use a panel tag to make animal identification easier.





Lost tags



Removing tags

You must:



Contact OSPRI before removing a NAIT tag to get approval.



Record tag replacements in the NAIT information system.

It is an offence to remove NAIT tags without prior approval from OSPRI or an MPI NAIT officer.





Remember!

Register your cattle and deer

Tagging is only the first step.

Make sure you follow up by registering your cattle and deer.





PICA farmer Obligations



1

**Register
with NAIT**



2

**Register
location**



3

**Tag & register
animals**



4

**Record &
confirm**



5

**Keep NAIT
up-to-date**



Thank you

ospri.co.nz

info@ospri.co.nz

0800 482 463



**Scan this QR code to give feedback
on this education module.**

